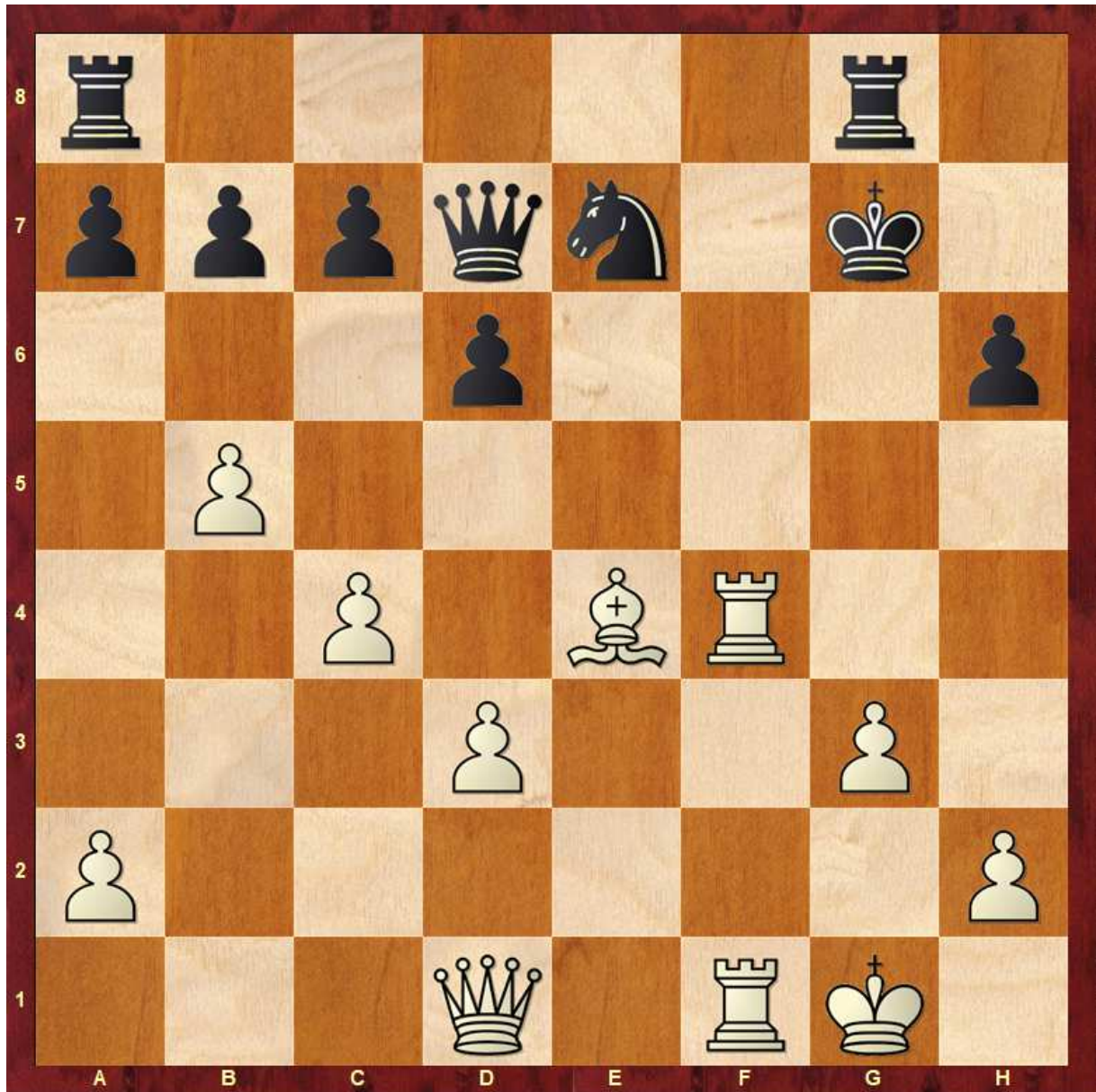


51: Weiß am Zug setzt Matt in 1 mit:

a) Dc5xa7

b) Dc5xc7

c) Lg3xc7

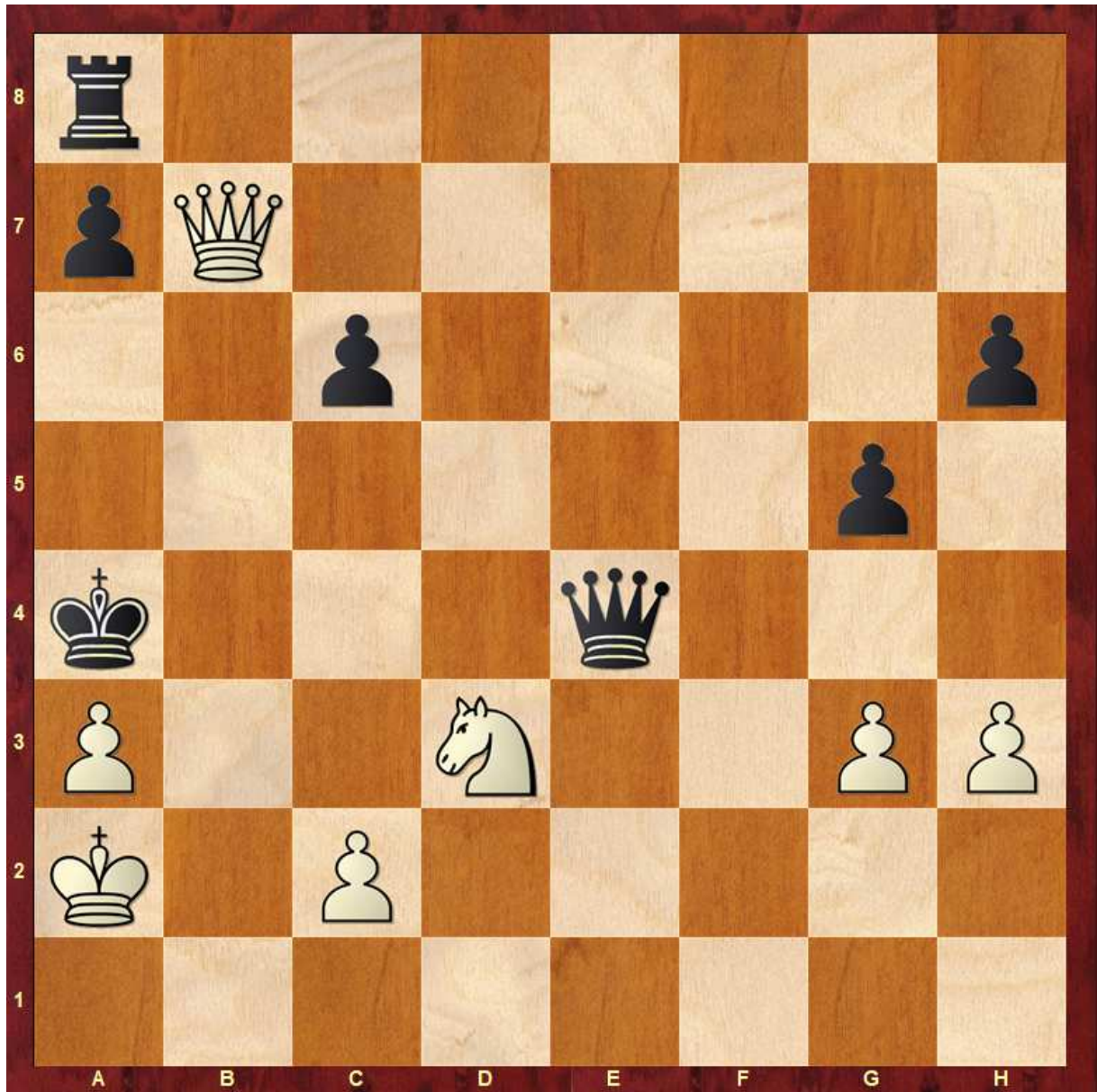


52: Weiß am Zug setzt Matt in 1 mit:

a) Tf4-f7

b) Dd1-g4

c) Dd1-a1



53: Weiß am Zug setzt Matt in 1 mit:

a) Db7-b3

b) Db7-a6

c) Sd3-c5

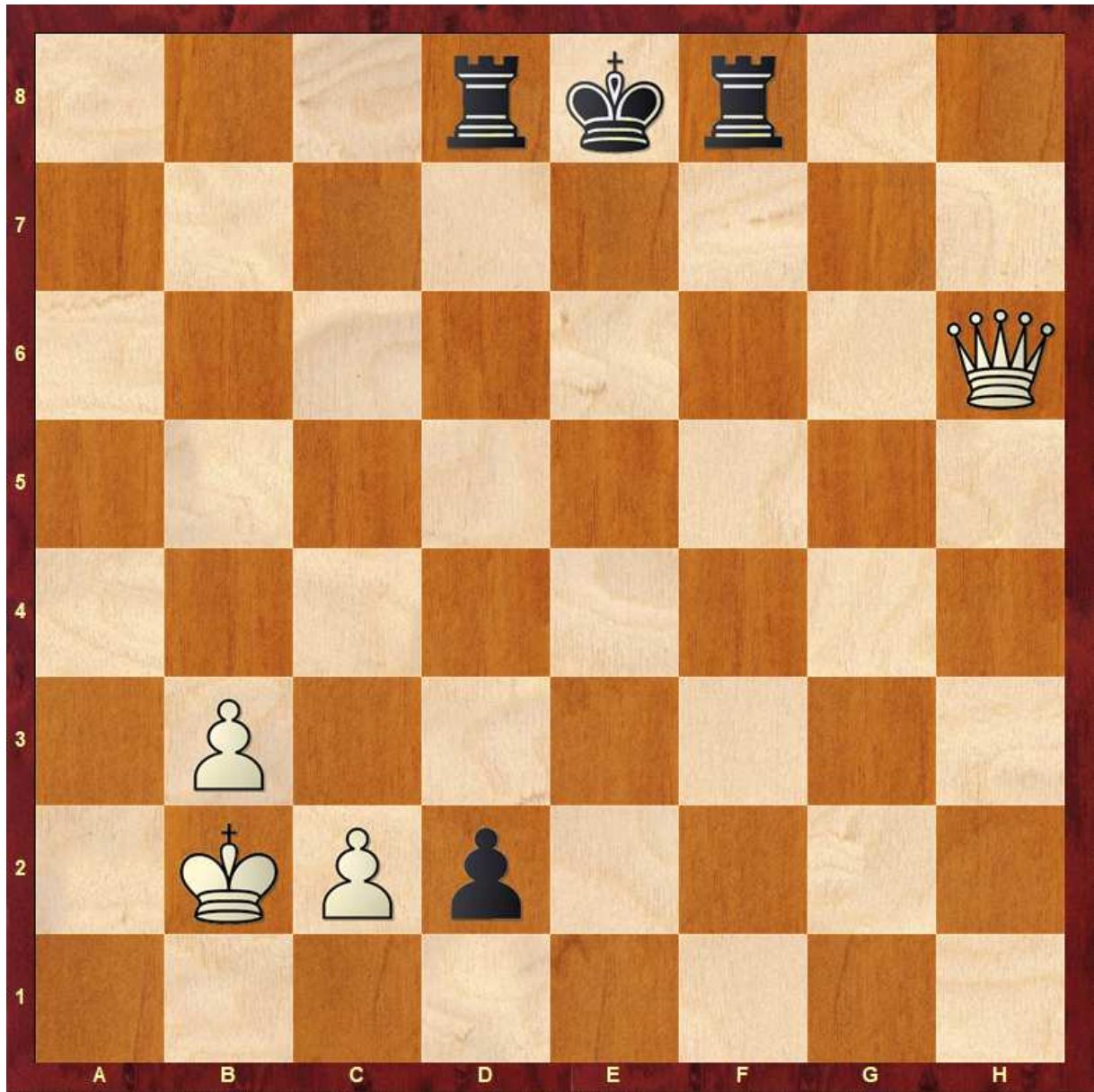


54: Weiß am Zug setzt Matt in 1 mit:

a) g2-g4

b) Df4-g4

c) Lc4-e2

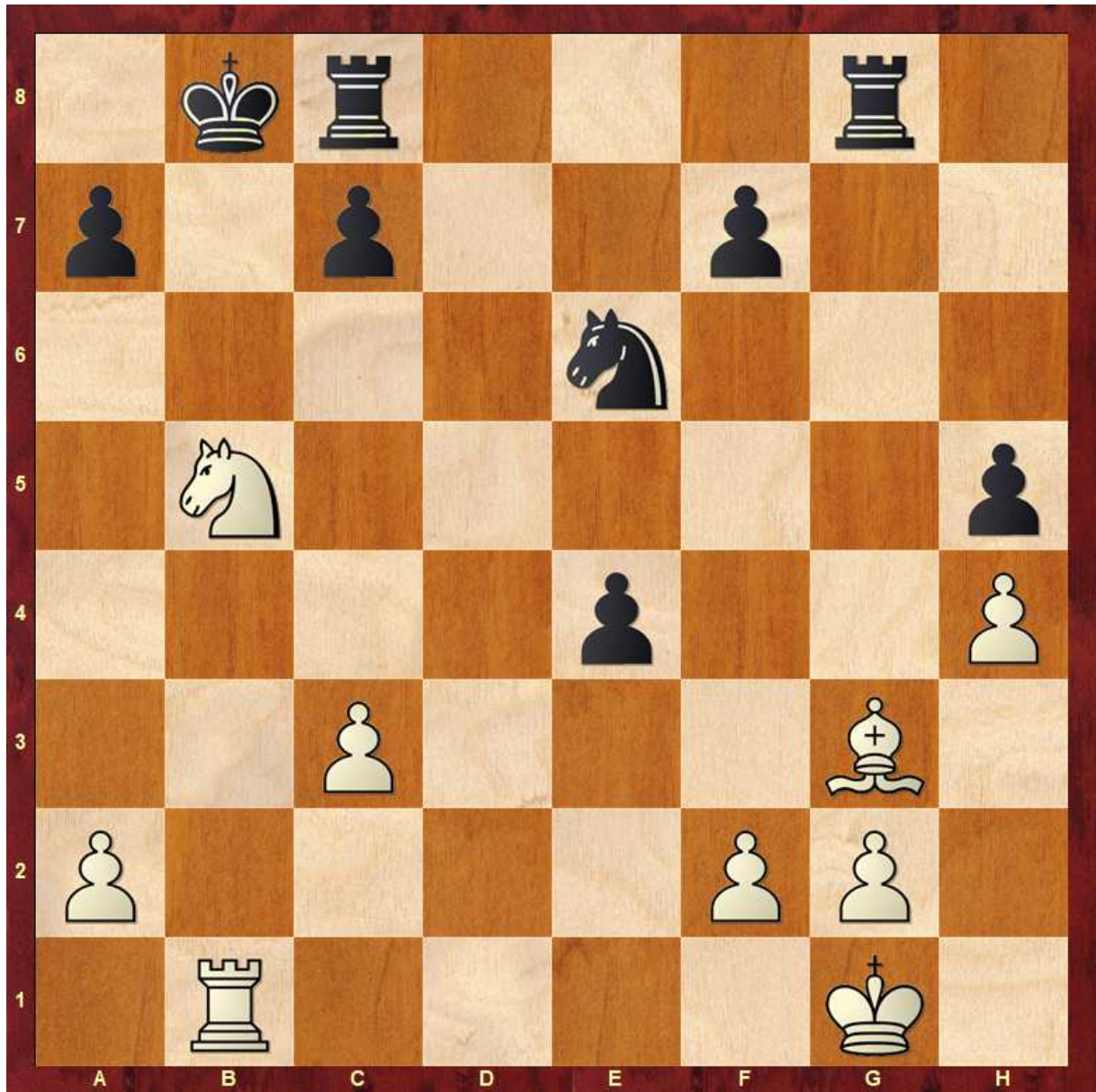


55: Weiß am Zug setzt Matt in 1 mit:

a) Dh6-e3

b) Dh6-g6

c) Dh6-e6

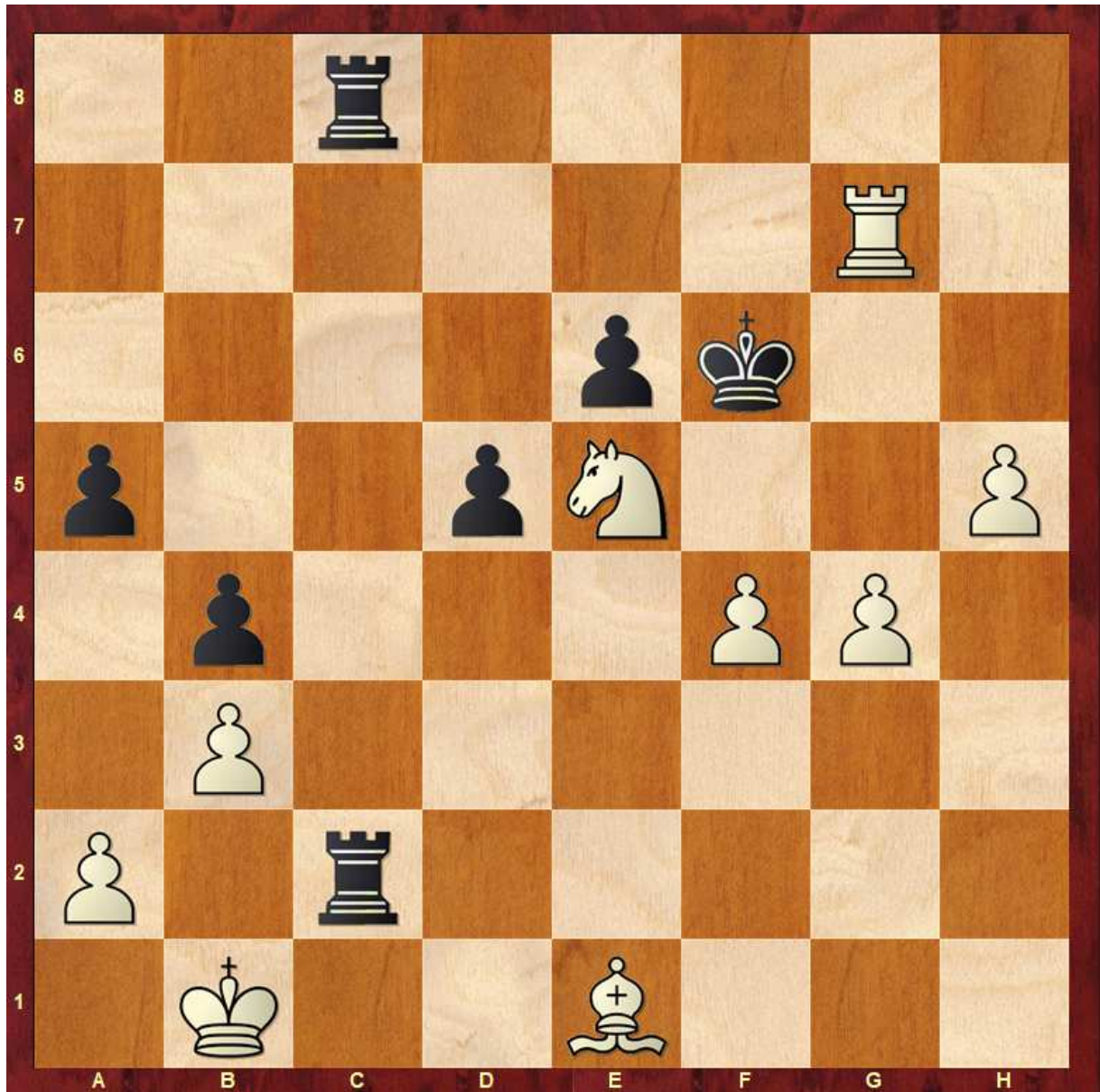


56: Weiß am Zug setzt Matt in 1 mit:

a) Sb5xc7

b) Lg3xc7

c) Sb5-d6

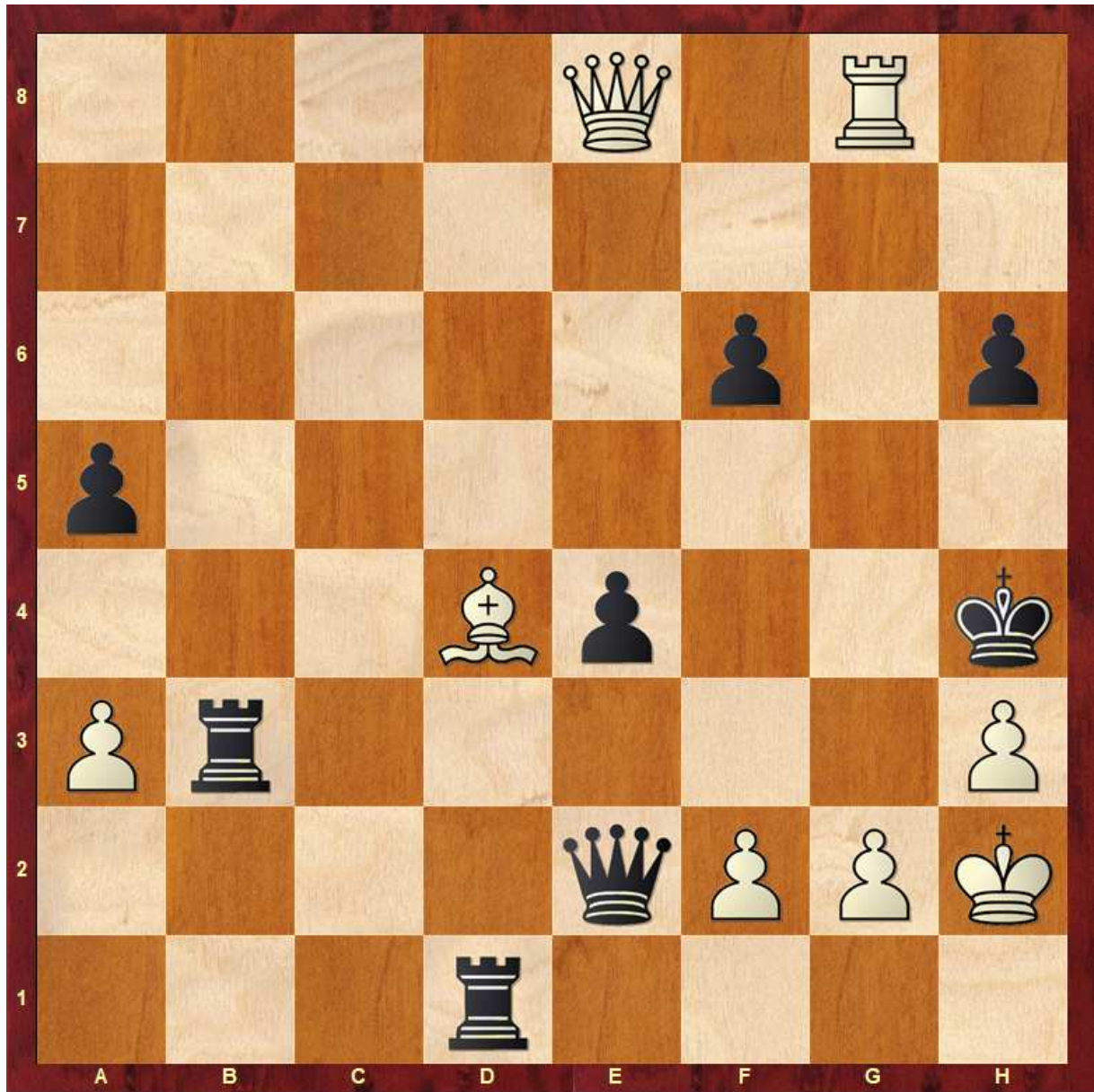


57: Weiß am Zug setzt Matt in 1 mit:

a) Tg7-f7

b) Le1-h4

c) Se5-d7

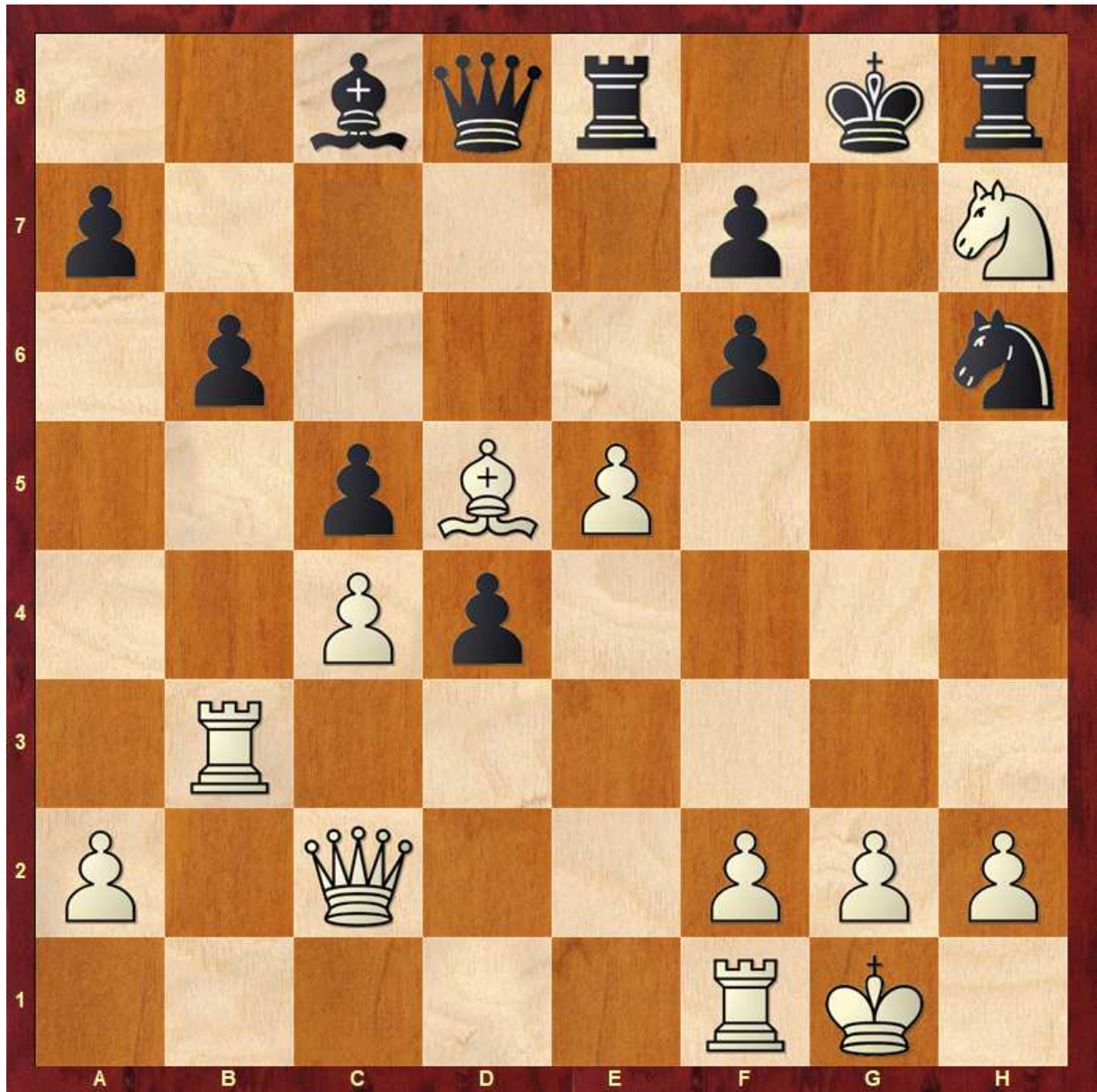


58: Weiß am Zug setzt Matt in 1 mit:

a) Ld4xf6

b) Tg8-g4

c) g2-g3

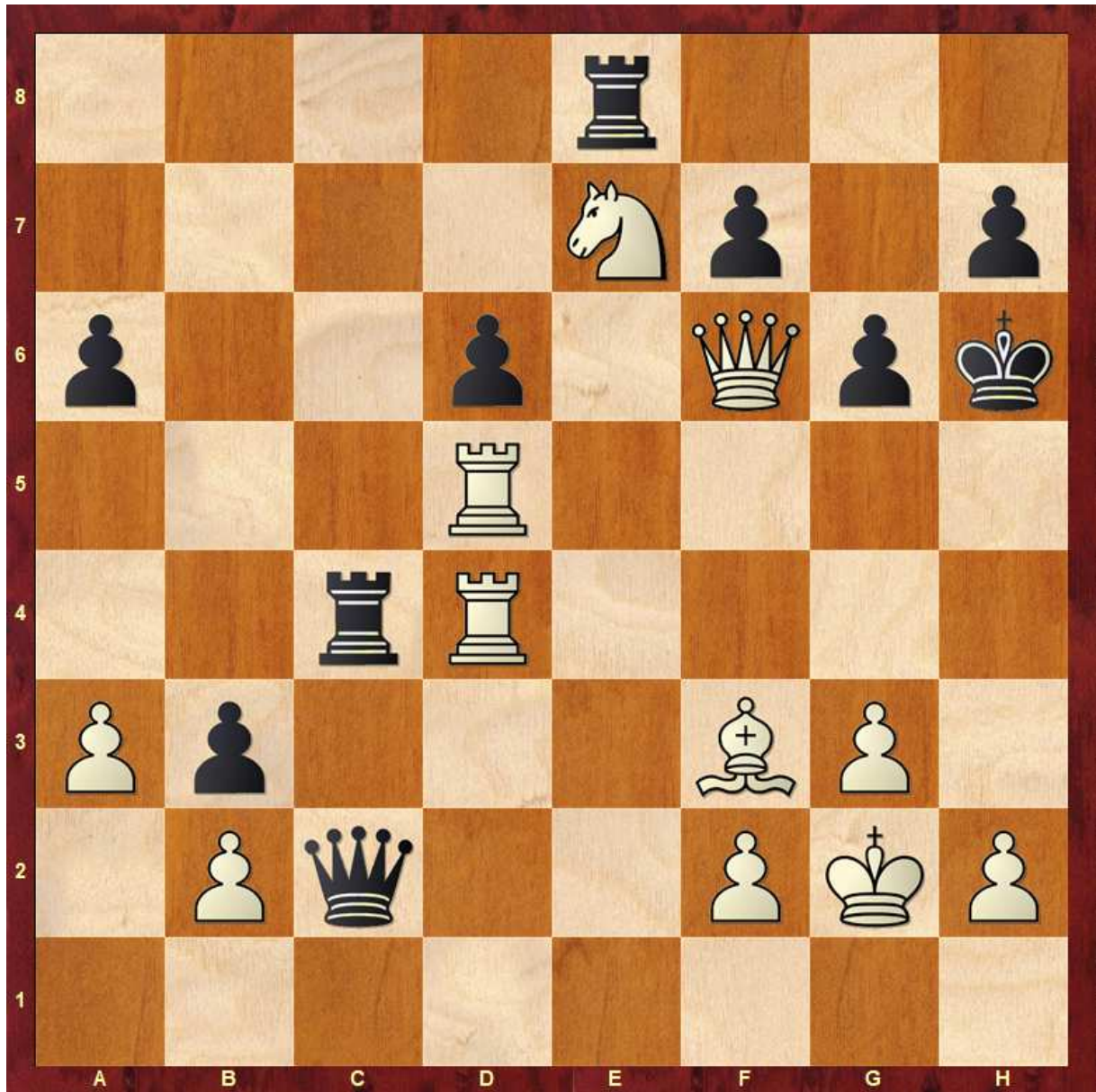


59: Weiß am Zug setzt Matt in 1 mit:

a) Dc2-g6

b) Sh7-f6

c) Tb3-g3

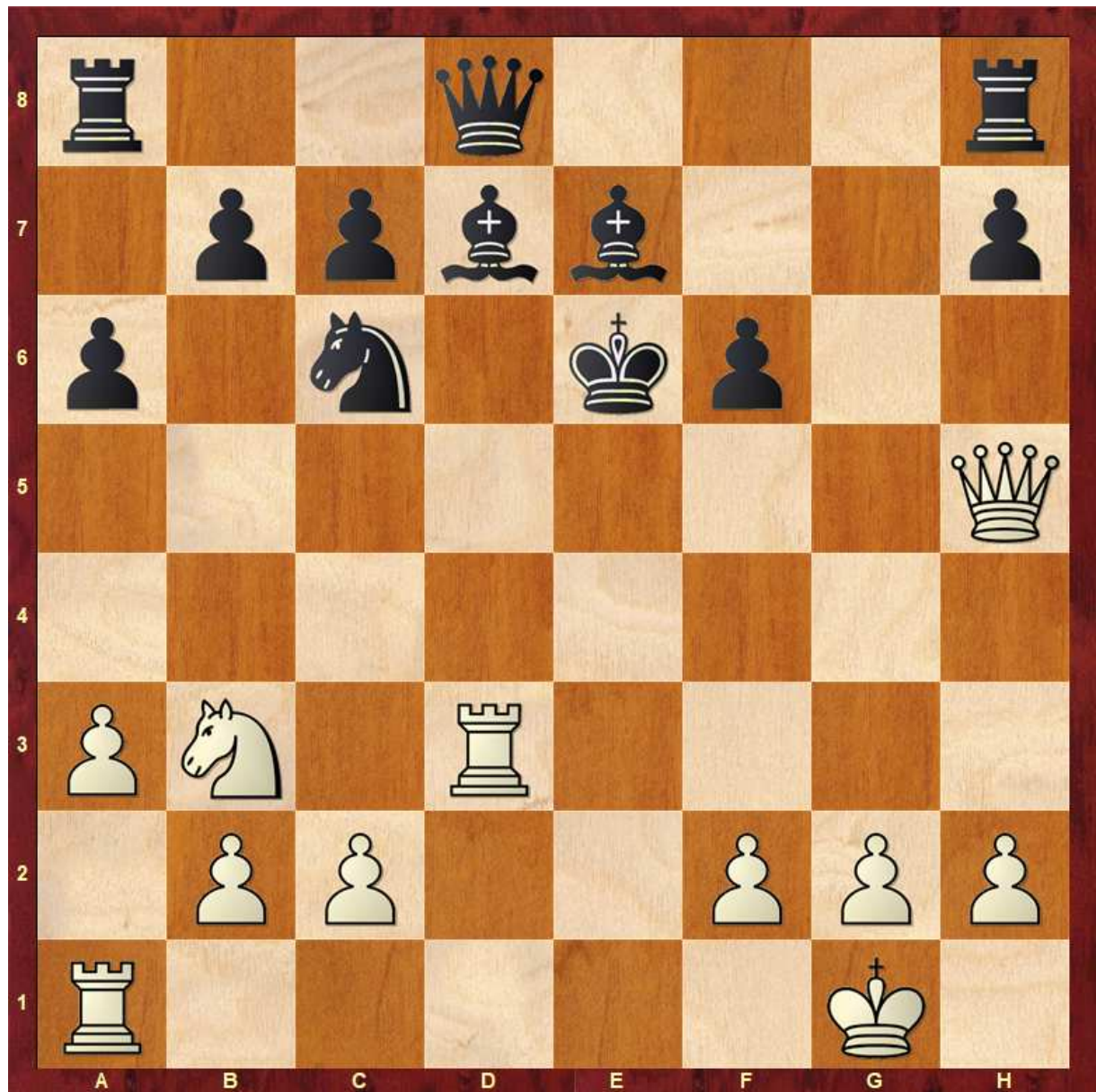


60: Weiß am Zug setzt Matt in 1 mit:

a) Td5-h5

b) Td4-h4

c) Se7-f5

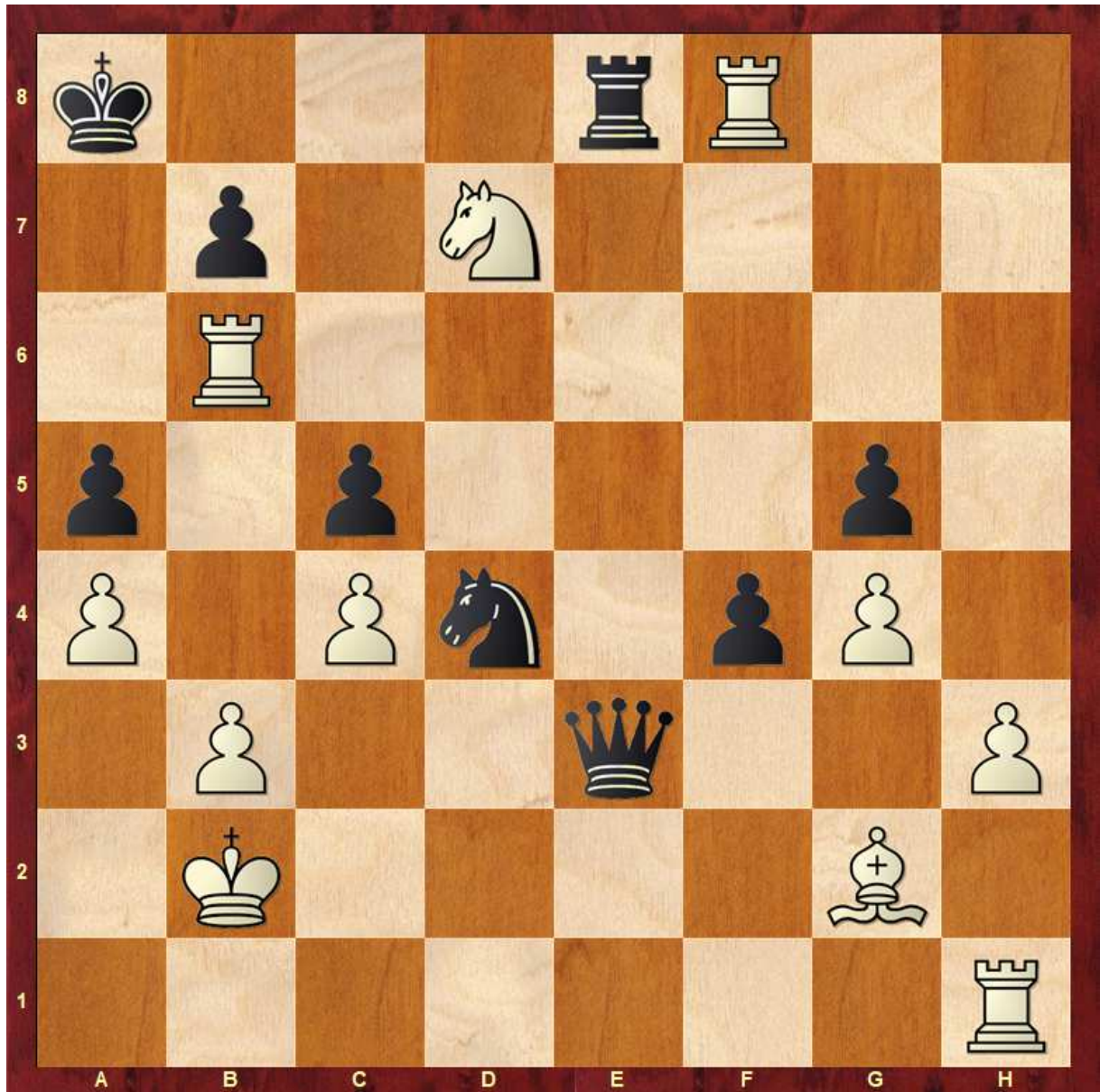


61: Weiß am Zug setzt Matt in 1 mit:

a) Sb3-c5

b) Ta1-e1

c) Dh5-d5

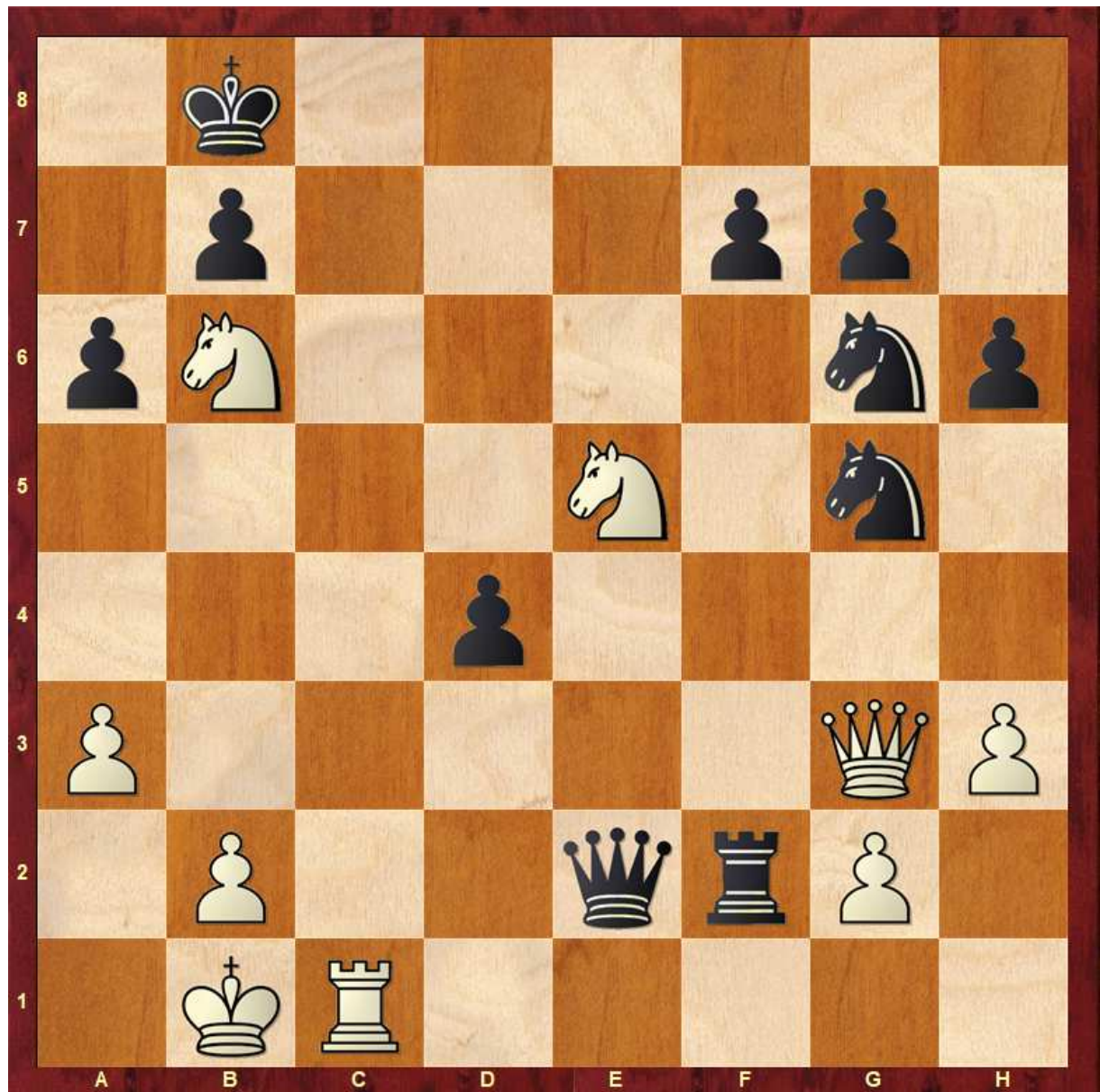


62: Weiß am Zug setzt Matt in 1 mit:

a) Lg2-xb7

b) Tf8-xe8

c) Tb6-a6

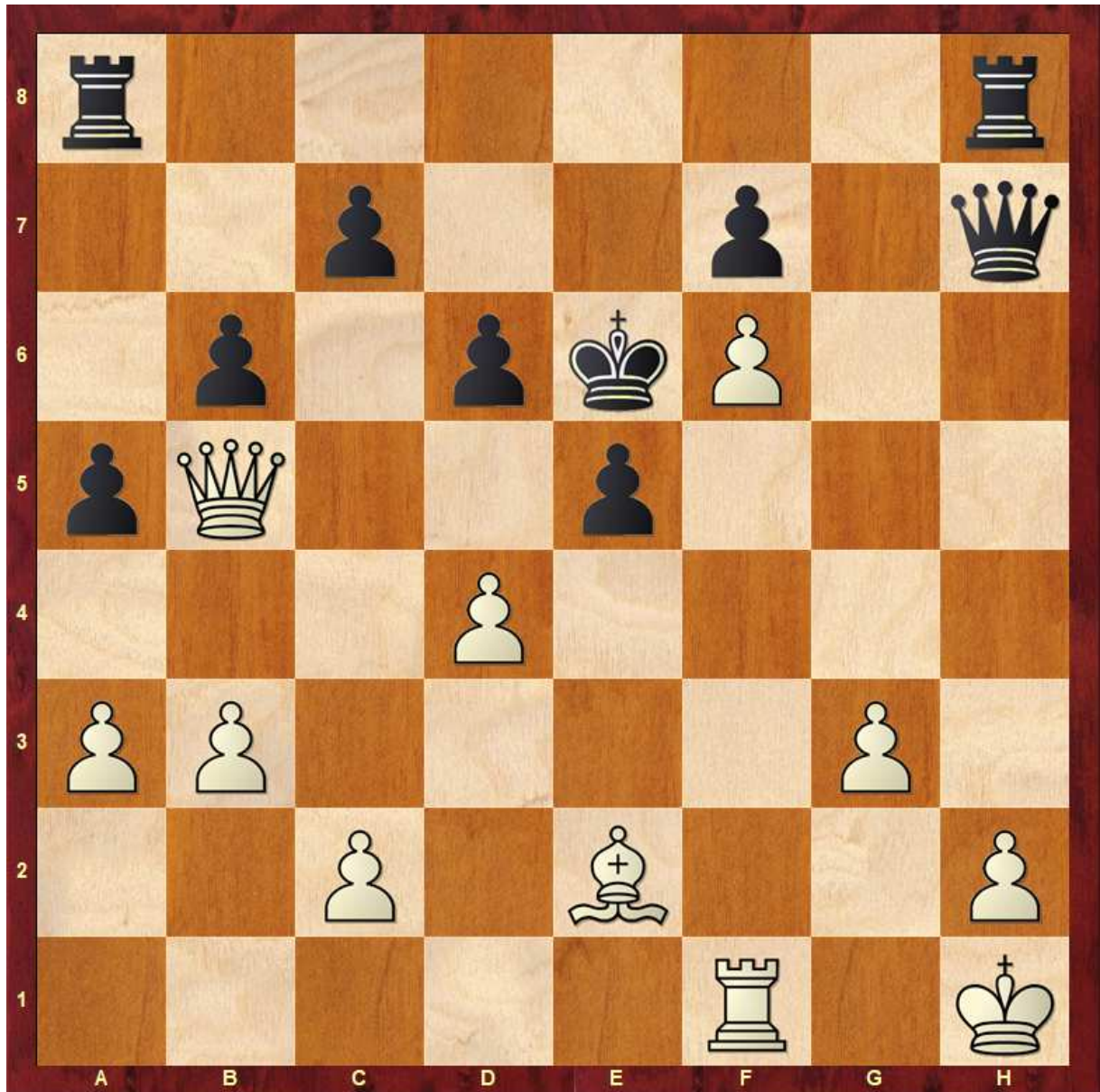


63: Weiß am Zug setzt Matt in 1 mit:

a) Tc1-c8

b) Se5-c6

c) Se5-d7

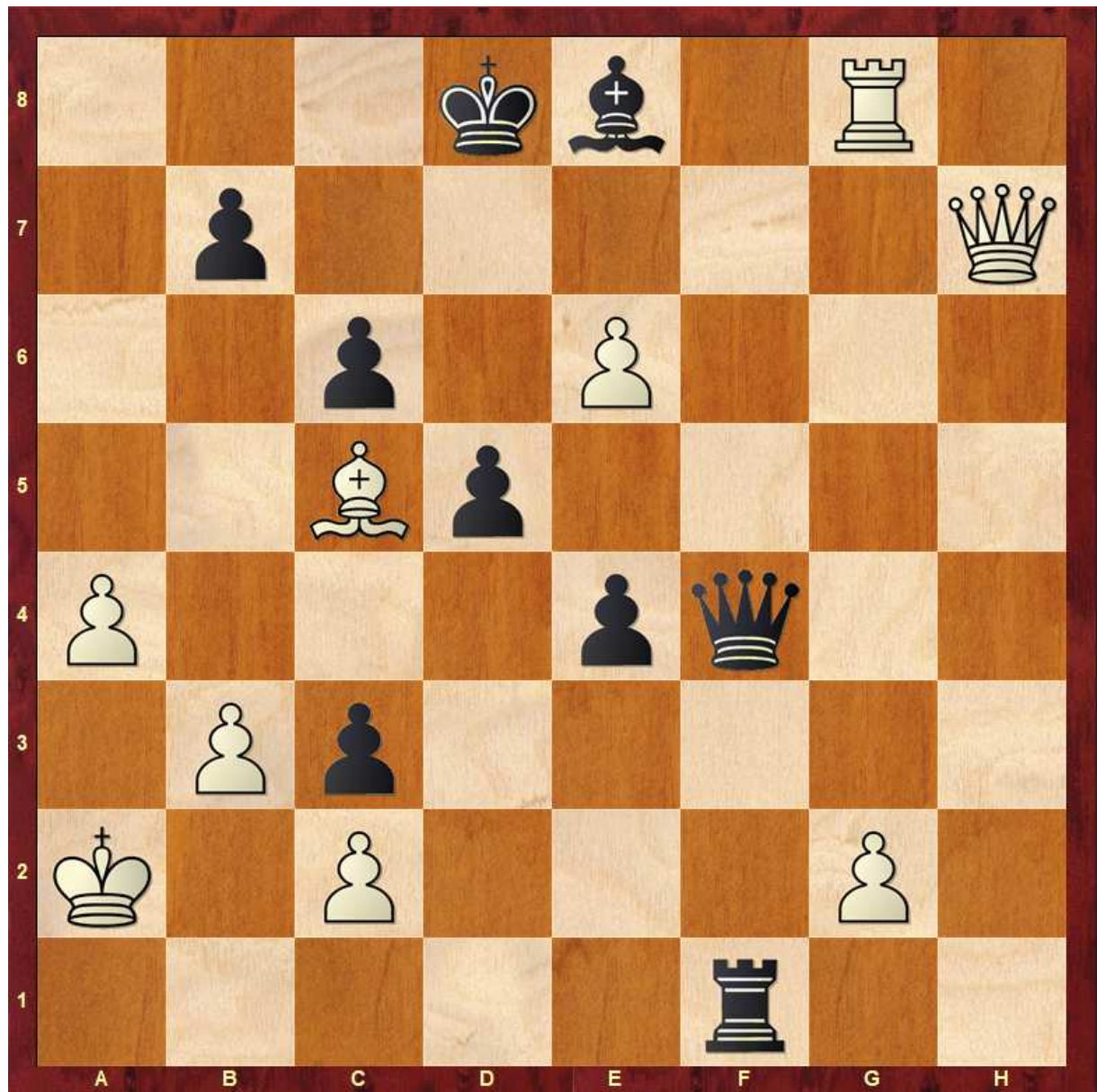


64: Weiß am Zug setzt Matt in 1 mit:

a) d4-d5

b) Le2-g4

c) Le2-c4

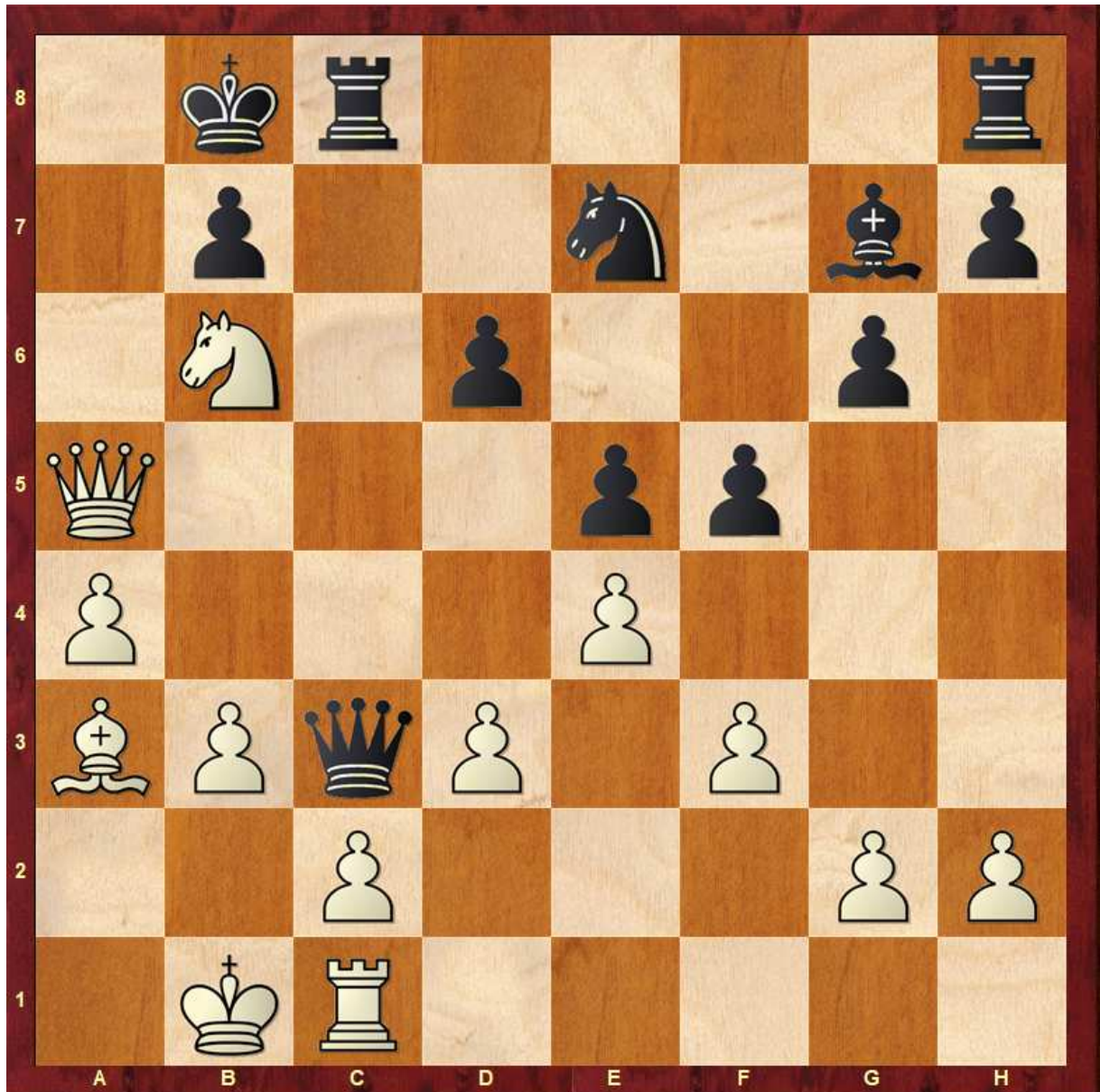


65: Weiß am Zug setzt Matt in 1 mit:

a) Lc5-b6

b) Dh7-e7

c) Dh7-d7

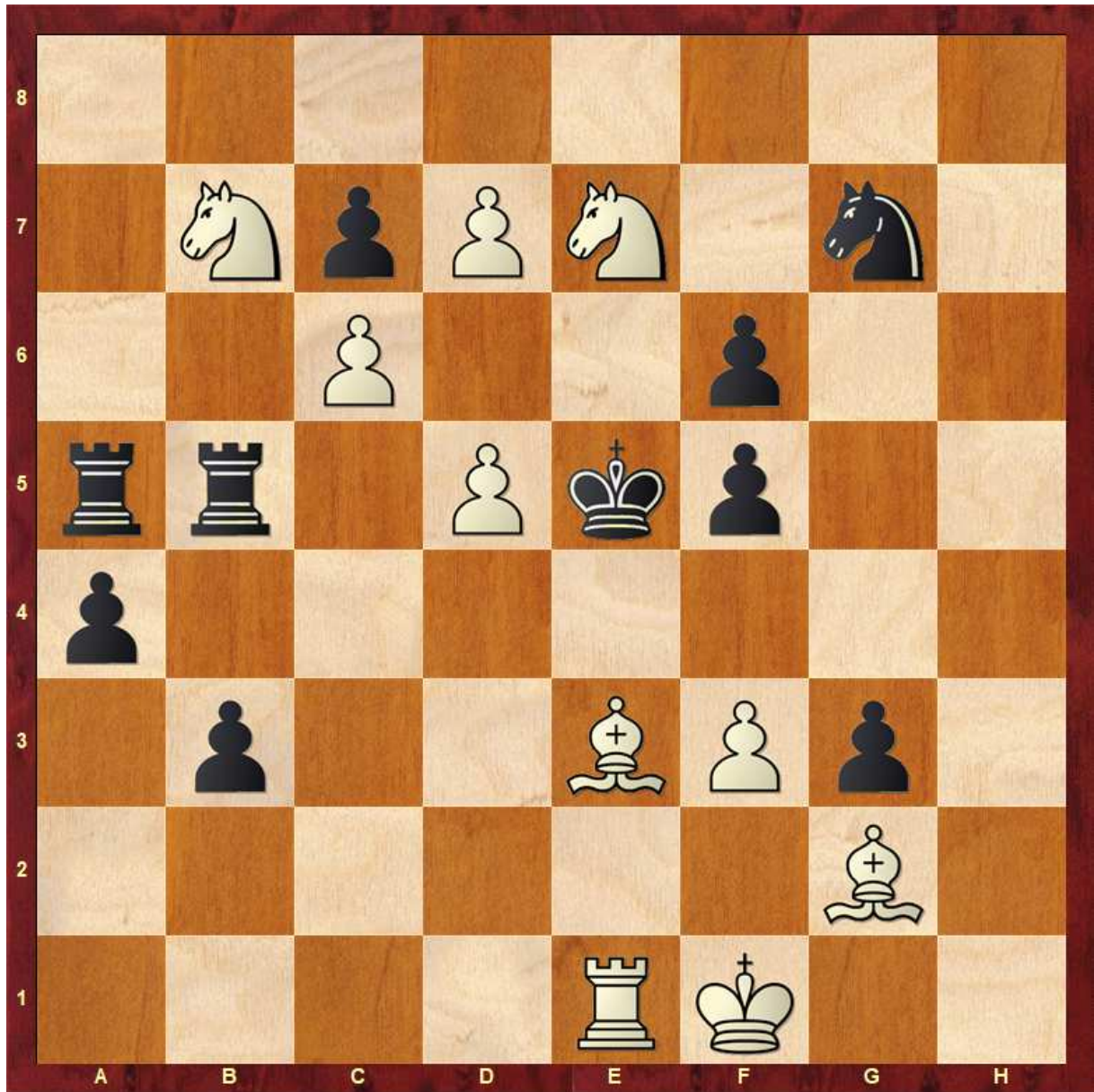


67: Weiß am Zug setzt Matt in 1 mit:

a) Da5-a8

b) Sb6-d7

c) La3-d6

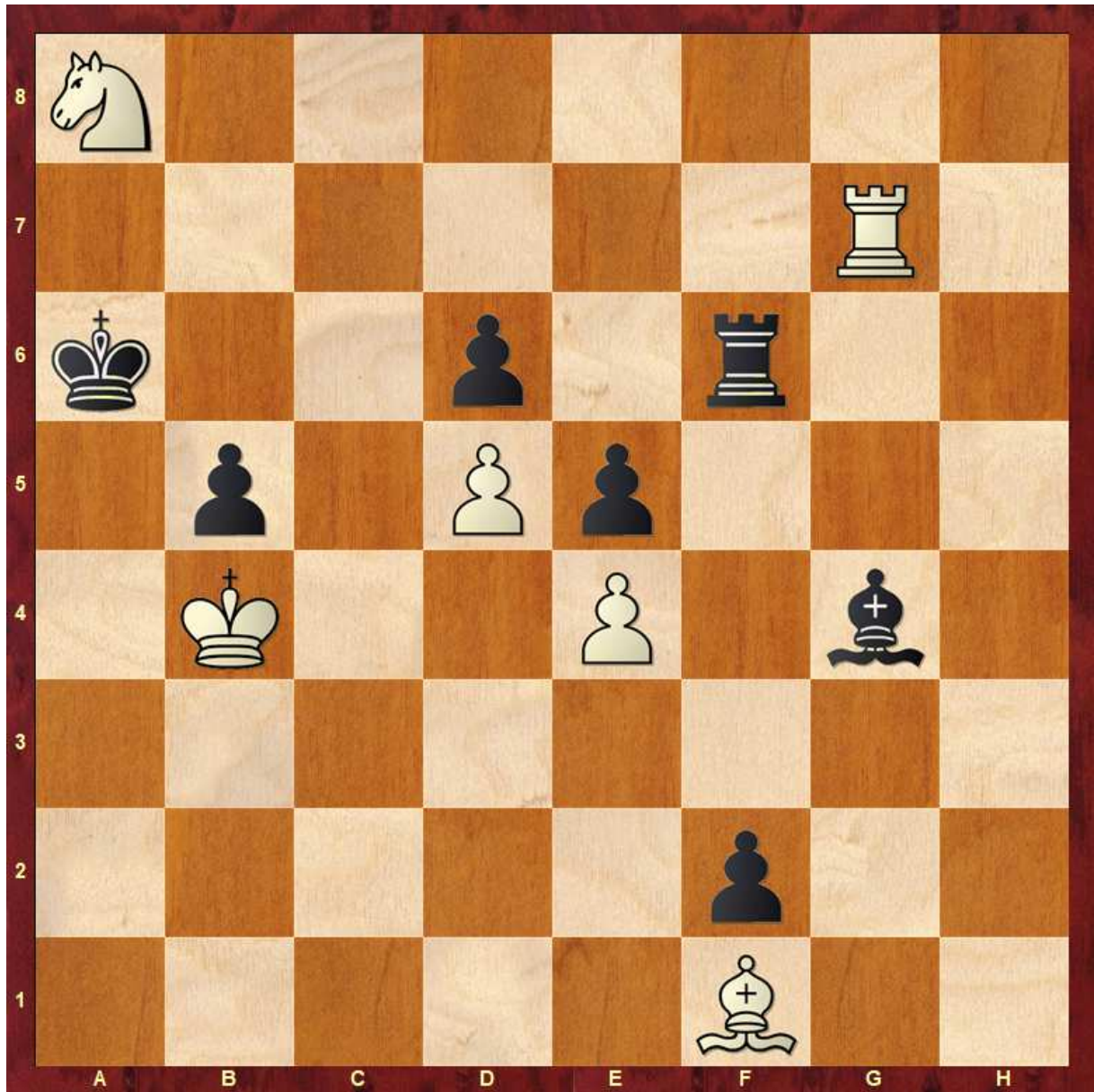


70: Weiß am Zug setzt Matt in 1 mit:

a) Le3-c5

b) Se7-g6

c) f3-f4



100: Weiß am Zug setzt Matt in 1 mit:

a) Tg7-a7

b) Sa8-c7

c) Lf1xb5

Lösungen:

- | | | | |
|------|------------------|------------------|------------------|
| 51: | a) Dc5xa7 | b) Dc5xc7 | c) Lg3xc7 |
| 52: | a) Tf4-f7 | b) Dd1-g4 | c) Dd1-a1 |
| 53: | a) Db7-b3 | b) Db7-a6 | c) Sd3-c5 |
| 54: | a) g2-g4 | b) Df4-g4 | c) Lc4-e2 |
| 55: | a) Dh6-e3 | b) Dh6-g6 | c) Dh6-e6 |
| 56: | a) Sb5xc7 | b) Lg3xc7 | c) Sb5-d6 |
| 57: | a) Tg7-f7 | b) Le1-h4 | c) Se5-d7 |
| 58: | a) Ld4xf6 | b) Tg8-g4 | c) g2-g3 |
| 59: | a) Dc2-g6 | b) Sh7-f6 | c) Tb3-g3 |
| 60: | a) Td5-h5 | b) Td4-h4 | c) Se7-f5 |
| 61: | a) Sb3-c5 | b) Ta1-e1 | c) Dh5-d5 |
| 62: | a) Lg2-xb7 | b) Tf8-xe8 | c) Tb6-a6 |
| 63: | a) Tc1-c8 | b) Se5-c6 | c) Se5-d7 |
| 64: | a) d4-d5 | b) Le2-g4 | c) Le2-c4 |
| 65: | a) Lc5-b6 | b) Dh7-e7 | c) Dh7-d7 |
| 67: | a) Da5-a8 | b) Sb6-d7 | c) La3-d6 |
| 70: | a) Le3-c5 | b) Se7-g6 | c) f3-f4 |
| 100: | a) Tg7-a7 | b) Sa8-c7 | c) Lf1xb5 |