



## Bulletin

Austrian National Championships in Orienteering and 6. Austria Cup, long distance

**Saturday, 10th September 2022**

and

7th Austria-Cup and ASKÖ Federal Championships, middle distance,

**Sunday, 11th September 2022**

in remembrance of orienteering pioneer Franz Trampusch

As organizer of this orienteering weekend, Leibnitzer AC warmly welcomes all orienteers from Austria and its neighboring countries in Altenberg/Leibnitz.

### ORGANIZATION

<b>Organizer:</b>	Austrian Orienteering Federation
<b>Performing organizer:</b>	Leibnitzer AC OLG
<b>Patronage:</b>	Walter Novak (major of Tillmitsch), Gerhard Hartinger (major of St. Nikolai im Sausal), Josef Fischer (major of Kitzeck im Sausal), President of ASKÖ Austria Hermann Krist, President of ASKÖ-Steiermark Gerhard Widmann
<b>Event director:</b>	Jürgen Egger
<b>National and IOF-controller:</b>	Eugen Kainrath

### ALL ABOUT THE COMPETITION

	<b>Long distance • Saturday, 10th September 2022</b>	<b>Middle distance • Sunday, 11th September 2022</b>
<b>Event location:</b>	Weingut Fröhlich, Altenberg 62, 8434 Tillmitsch (46°47'57.4"N 15°29'52.2"E)	
<b>Event center:</b>	opens at 12:00 am until 2:00 pm	opens at 09:00 am until 10:30 am
<b>How to get there:</b>	By car: motorway A9, Exit "Lebring" or „Gralla“, road L602 and L666 to Altenberg direction: Tillmitsch, or "Weingut Fröhlich"; some OL flags showing the way.	
<b>Parking:</b>	Some parking lots near to the event center and along a narrow municipal road (see map). Please follow the instructions and park on the side of the road. You are encouraged to form carpools. Distance from the event center to the finish: up to 400 m. Busses are to register at: juergen.egger.2810@gmail.com	
<b>Entry packages:</b>	At the event center on Saturday, for both stages Transfer the entry fees before arrival. Banking details: Leibnitzer AC OLG / IBAN: AT872081510000031210 / BIC: STSPAT2GXXX11 Bank: Die Steiermärkische Sparkassen AG; Intended purpose: Entry fee/Club	
<b>Number bibs:</b>	To be picked up for both days on Saturday. Please wear them well visible on the chest during both races. We do not provide safety pins.	
<b>Timing and punching system:</b>	We use SPORT-Ident. You can punch touch free using SI Air+ Chip (operating distance: 30 cm).	
<b>Renting SI:</b>	There are SI chips to be rented in limited numbers (no SI Air+!). SI-rent = € 2,- (deposit of € 30,- or identity document on site).	



	Long distance • Saturday, 10th September 2022	Middle distance • Sunday, 11th September 2022
<b>Children's race:</b>	Meeting approx. 100 m south of the event center along the alley (see map). Staff on site from 4:15 pm to 5:00 pm.	Meeting at the finish area of the first stage (see map). Staff on site from 12:15 am to 1:00 pm.
<b>Toilets:</b>	Toilets at the event center. No toilets at the start. No dressing room or showers.	Toilets at the event center. Toilets at the start. No dressing room or showers.
<b>Club camp area:</b>	Meadow at the finish of Saturday. It is recommended to set up club tents.	
<b>Refreshments and catering:</b>	Refreshment drinks at the finish. "Weingut Fröhlich" offers food and drink especially for the event participants. This service is not part of the event. Visit the winery only as paying customer. No spikes allowed.	
<b>First Aid:</b>	Dr. Wolfram Heidinger	
<b>Timekeeping:</b>	Eugen Kainrath at the event center	
<b>Results:</b>	displayed at the event center and online <a href="https://liveresultat.orientering.se/">https://liveresultat.orientering.se/</a>	
<b>Jury:</b>	Eugen Kainrath, Roland Kohlbacher and Elisabeth Kirchmeir	
<b>Prizegiving ceremony:</b>	approx. at 5:30 pm at the event center. Medals in the championship classes. As well as the book about the PWT „Made for loving it“ in all classes. Prices are only handed out to the winners and not to persons who act as their deputies.	approx. 1:30 pm at the event center. Medals in the ASKÖ championship. The winners are provided with world watches in all classes. Second and third receive styrian pumpkin seed oil. Prices are only handed out to the winners and not to persons who act as their deputies.
<b>Max. time limit, Finish closing at:</b>	3 hours, 5:30 pm	2 hours, 2 pm
<b>General Information:</b>	<p>The event is carried out in accordance with the current Austrian Orienteering Competition Rules. The competition area is under training embargo until the event.</p> <p>The organizer does not accept liability for any arising damage directly or indirectly. All participants take part on their own responsibility.</p> <p>The provisions of the road traffic regulations and forestry law must be observed. In case of an event cancellation nor the Austrian Orienteering Federation (ÖFOL) nor the organizer does accept liability for any rising costs.</p> <p>Data protection: Entries, start lists and results are published on the internet. Some photos and footage can be taken on the event day which may be published on different media platforms of our club and federation. You may find some further information on privacy protection regulations at: <a href="http://www.oefol.at/datenschutz">www.oefol.at/datenschutz</a>.</p>	

#### MAP, FOREST AND TERRAIN

	Long distance • Saturday, 10th September 2022	Middle distance • Sunday, 11th September 2022
<b>Map:</b>	Maxloner Wald	
<b>Cartography</b>	Herwig Allwinger, Gábor and Miklós Forrai	
<b>Scale:</b>	1:15000, 1:10000 and 1:7500 Scales related to classes see <i>COURSES</i>	1:10000 and 1:7500 Scales related to classes see <i>COURSES</i>
<b>Contour interval:</b>	5 m	
<b>State:</b>	August 2022	
<b>Map size</b>	DIN A4, DIN A3	
<b>Printing:</b>	120 g/m², PRETEX DIGITAL, Druckhaus Kurz, Mürrzuschlag	



<b>Terrain:</b>	Covered by forest with some hills and valleys and a loose path system. The underground is usually uncovered and easy to run, however interchanging with some densely overgrown areas. Some forest aisles are overgrown by fast growing vegetation such as high grass, nettle and wild balsam and therefore difficult to run.	
<b>Forest, meadows, farmland, and forbidden areas:</b>	Forbidden areas according to the regulations to the ÖFOL, which means: Do not cross farmland, unmowed meadows and forbidden areas.	
<b>Traffic roads:</b>	The road traffic regulations are to be observed! The traffic around the competition area is low-frequented. The terrain is outlined by the municipal road L634 on the west side. Please run only along the east side of the road.	The road traffic regulations are to be observed! No traffic roads to cross or to run along.
<b>Relative height</b>	80 Hm	

## COMPETITION

	<b>Long distance • Saturday, 10th September 2022</b>	<b>Middle distance • Sunday, 11th September 2022</b>
<b>First start:</b>	1:00 pm for D/H 21 Elite (official first start) All other classes from 2 pm. Free choice start window: „Offen lang“, „Offen kurz“, „Familie“ and „Neulinge“: 2:00 pm to 3:30 pm.	10:00 am  Free choice start window: „Offen lang“, „Offen kurz“, „Familie“ and „Neulinge“: 10:30 to 11:30 pm.
<b>Start lists:</b>	Online at <a href="https://www.oefol.at/anne/?p=1&amp;q=3&amp;id=3828">https://www.oefol.at/anne/?p=1&amp;q=3&amp;id=3828</a> (on Thursday before the event the latest)	
<b>Control descriptions:</b>	Printed on the map and additionally, in the startbox for the elite classes. Available at the event center for all other classes (in some cases as text as well).	
<b>Distance to start:</b>	500 m / 0 m yellow „Raiffeisen“ ribbons	1500 m / 10 m yellow „Raiffeisen“ ribbons
<b>Distance from finish to event center:</b>	200 m / 0 m	1500 m / 70 m red-white ribbons
<b>Warm-up area:</b>	Only on the road to the start. We kindly ask you to respect the request of the landowner and <b>do not enter the meadow near to the start</b> . Additional warm up: eastwards from Parking 4 in the forest (see <i>Event area map</i> )	Only on the road to the start. The road to start runs alongside the competition area. Do not leave the road. Additional warm up: eastwards from Parking 4 in the forest (see <i>Event area map</i> ).
<b>Starting process:</b>	4 minutes before start: call 3 minutes before start: clear & check 2 minutes before start: control descriptions for all elite classes 1 minute before start: taking your position at your map (you can check the class) Mandatory passage: 100 m. Do not leave the mandatory passage. The starting point is marked by a control flag. No punching necessary. Classes with free choice start have their own starting control which has to be punched for the timekeeping.	4 minutes before start: call 3 minutes before start: clear & check 2 minutes before start: control descriptions for all elite classes 1 minute before start: taking your position at your map (you can check the class) Mandatory passage: 70 m. Do not leave the mandatory passage. The starting point is marked by a control flag. No punching necessary. Classes with free choice start have their own starting control which has to be punched for the timekeeping.



<b>Course lengths:</b>	see <i>COURSES</i>	
<b>SI reserve fields:</b>	There are SI reserve fields printed on the map. If an SI control does not work properly or is missing, punch into the field on the map.	
<b>Refreshment:</b>	There are two refreshment stations on the course. They are marked on the map.	No refreshments.
<b>Taking maps:</b>	Maps are taken away from you after your course. They will be available after the start of the last participant.	You can keep your map – Fair play please!
<b>Crossings:</b>	There are three crossings along a power line, near to the finish marked by the symbol „mandatory crossing“. Classes crossing the power line may use these crossings.	No special crossings.
<b>Mandatory passage:</b>	<p>The classes „D/H-10“, „Neulinge“ and „Familie“ will pass a mandatory passage of 140 m between the controls 91 and 74. The passage is marked with yellow flags and taped with „Raiffeisen“ ribbons.</p> <p>The classes D/H21- will pass a mandatory passage of 160 m from control 60 to control 55. The passage is taped with red-white ribbons.</p>	No special crossings.
<b>Map exchange:</b>	There is a map exchange in the classes D/H21-Elite at control 55. Punch the control 55 first and take the new map next.	No map exchanges.
<b>Course setting:</b>	Stefan Hartinger	Helmut Lerchegger
<b>Courses:</b>	You can expect varied courses and interesting route choices.	
<b>Last bit of information:</b>	No participation with dogs.	

## COURSES

	<b>Long distance • Saturday, 10th September 2022</b>				<b>Middle distance • Sunday, 11th September 2022</b>			
Class	Length	Climbing	Controls	Scale	Length	Climbing	Controls	Scale
D-12	2400	145	14	1:7500	1800	90	9	1:7500
D-14	3400	190	15	1:7500	2000	70	10	1:7500
D15-18	3700	200	12	1:10000	2900	110	11	1:7500
D16-E	4600	255	11	1:15000	3700	90	15	1:10000
D18-E	5300	275	12	1:15000	4100	145	15	1:10000
D20-E	6600	330	14	1:15000	4100	145	15	1:10000
D21-E	11200	555	23*	1:15000	5100	210	19	1:10000
D21-Lang	6000	295	12	1:10000	3700	95	14	1:10000
D21-Kurz	4000	250	9	1:10000	2300	80	12	1:7500
D Hobby	3700	200	12	1:10000	2900	110	11	1:7500
D35-	6000	295	12	1:10000	3700	95	14	1:10000
D40-	5100	255	13	1:10000	3400	150	16	1:7500
D45-	4800	265	11	1:7500	3300	90	15	1:7500
D50-	4500	260	9	1:7500	2700	125	12	1:7500
D55-	4000	250	9	1:7500	2800	100	12	1:7500
D60-	4000	250	9	1:7500	2300	80	12	1:7500
D65-	3700	205	10	1:7500	2300	80	12	1:7500

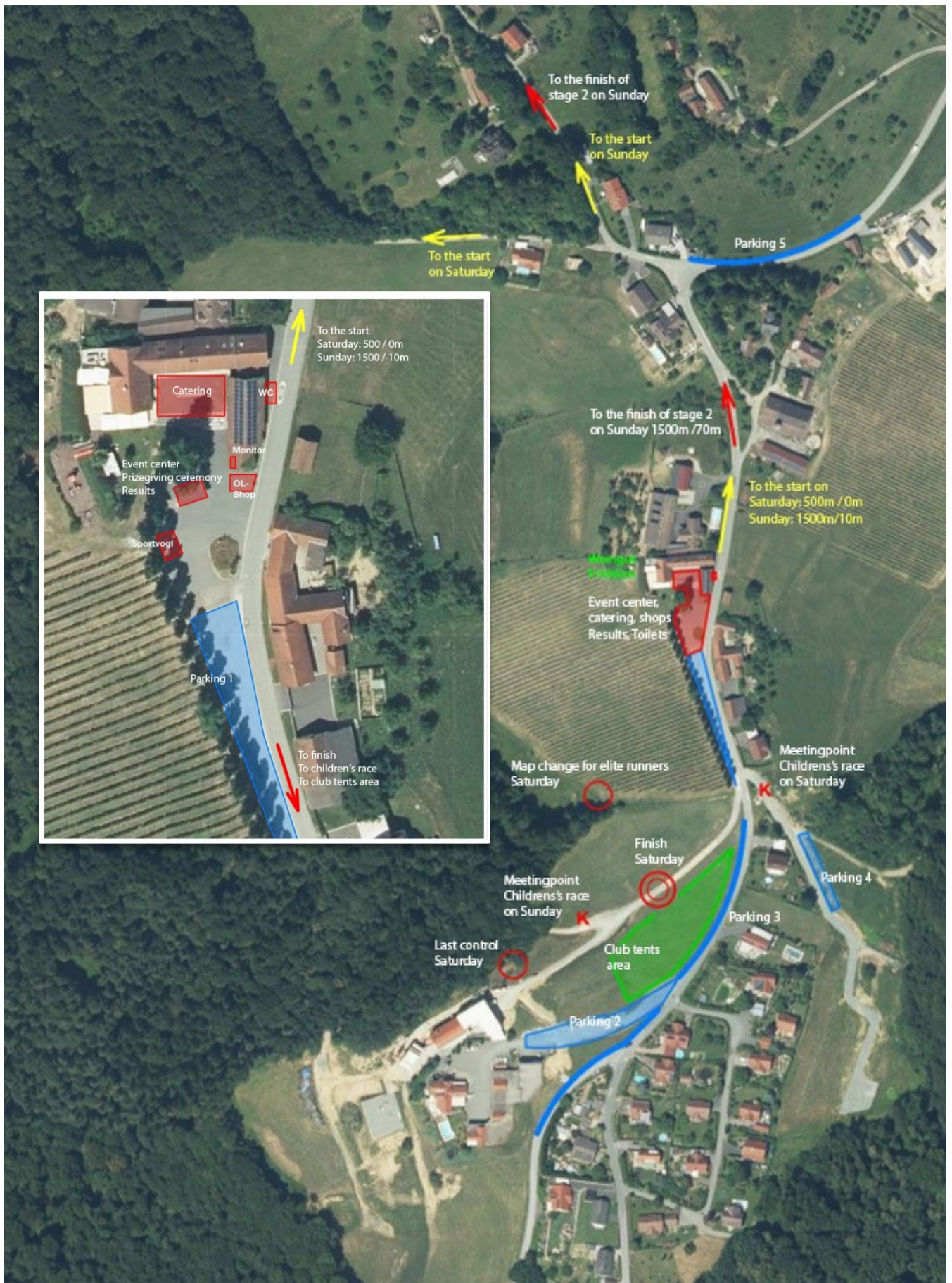


D70-	3100	175	10	1:7500	2000	95	11	1:7500
D75-	3100	175	10	1:7500	2000	95	11	1:7500
H-12	2400	145	14	1:7500	1800	90	9	1:7500
H-14	3400	190	15	1:7500	2400	130	10	1:7500
H15-18	4400	205	12	1:10000	2900	135	11	1:7500
H16-E	5700	315	13	1:15000	4200	235	16	1:10000
H18-E	7400	390	12	1:15000	5200	235	18	1:10000
H20-E	9100	385	16	1:15000	5200	235	18	1:10000
H21-E	14400	695	25*	1:15000	5900	270	23	1:10000
H21-Lang	9100	385	16	1:10000	5200	250	20	1:10000
H21-Kurz	6000	295	12	1:10000	2300	80	12	1:7500
H Hobby	4400	205	12	1:10000	2900	135	11	1:7500
H35-	9100	385	16	1:10000	5200	250	20	1:10000
H40-	8100	435	18	1:10000	4800	170	21	1:7500
H45-	7700	370	13	1:7500	4200	245	19	1:7500
H50-	7200	330	11	1:7500	4700	170	20	1:7500
H55-	6600	315	12	1:7500	4200	195	17	1:7500
H60-	6000	295	12	1:7500	3400	150	16	1:7500
H65-	5100	255	13	1:7500	3300	90	15	1:7500
H70-	4800	265	11	1:7500	2700	125	12	1:7500
H75-	4500	260	9	1:7500	2300	80	12	1:7500
H80-	3700	205	10	1:7500	2000	95	11	1:7500
D-10	1900	70	12	1:7500	1300	10	7	1:7500
H-10	1900	70	12	1:7500	1300	10	7	1:7500
Familie	2400	135	15	1:7500	1800	90	9	1:7500
Neulinge	2400	135	15	1:7500	1300	10	7	1:7500
Offen Lang	5700	315	13	1:10000	4200	235	16	1:7500
Offen Kurz	4000	250	9	1:7500	2900	110	11	1:7500

\* map exchange



## Event area map



Many thanks to our partners and sponsors,

in the name of the organizing team

Jürgen Egger

#### PARTNERS



Tillmitsch



St. Nikolai im Sausal



Kitzeck im Sausal



Weingut Fröhlich

#### SPONSORS

